

**Alvea.** Your future, our view.

The distinctive feature of our Smart Retail approach is the seamless integration between the digital world and the physical experience.

The boundaries between online and offline dissolve, allowing customers to explore, discover, and purchase products in an engaging and informative context. ALVEA is committed to providing a fully personalized experience.

Thanks to technology and data analysis, we can offer customers targeted suggestions and answers to their questions even before they are asked.

Our experts, always present in-store, will provide detailed information to guide customers in discovering all aspects of each individual product.



Interior wooden doors



Windows



Shading systems



Flooring and wall coverings

alvea

YOUR FUTURE OUR VIEW

alvea stores

MILAN

TURIN

ROME

FLORENCE

NAPLES

DOHA

DUBAI

RIYADH

alvea.it - info@alvea.it



minimal line

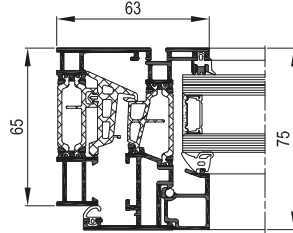




Casement doors and windows

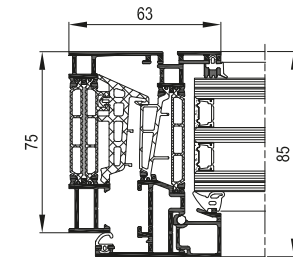


NC 65 STH HES SLIM



|   |  |   |
|---|--|---|
| Telaio fisso<br>Frame                         | Telaio mobile<br>Sash  | Spessore vetri<br>Glass thickness   |
| 65 mm   | 75 mm  | da 17 mm a 56 mm<br>variabile in funzione della linea estetica<br>depending on the aesthetic line |
| Trasmissione termica<br>Thermal transmittance | Valore Uf 1,7-2,4 W/m² K / Uf value 1,7-2,4 W/m² K<br>(Finestra 1 ante 1230 x 1480 mm; vetro Ug 0,9 W/m² K, Psi 0,036 W/m² K)<br>(1 casement window 1230 x 1480 mm; glass Ug 0,9 W/m² K, Psi 0,036 W/m² K) |   |

NC 75 STH HES SLIM



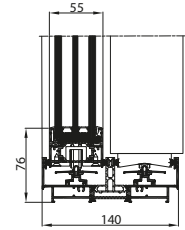
|   |  |   |
|---|--|---|
| Telaio fisso<br>Frame                         | Telaio mobile<br>Sash  | Spessore vetri<br>Glass thickness   |
| 75 mm   | 85 mm  | da 27 mm a 66 mm<br>variabile in funzione della linea estetica<br>depending on the aesthetic line |
| Trasmissione termica<br>Thermal transmittance | Valore Uf 1,2-2,4 W/m² K / Uf value 1,2-2,4 W/m² K<br>(Finestra 1 ante 1230 x 1480 mm; vetro Ug 0,9 W/m² K, Psi 0,031 W/m² K)<br>(1 casement window 1230 x 1480 mm; glass Ug 0,9 W/m² K, Psi 0,031 W/m² K) |   |



Sliding doors and windows

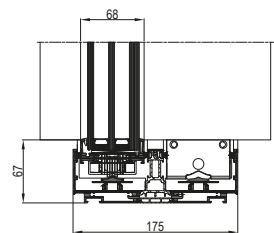


NC-S 120 HES LUX



|   |   |                                   |  |
|---|---|-----------------------------------|--|
| Telaio fisso<br>Frame                         | Telaio mobile<br>Sash   | Spessore vetri<br>Glass thickness | Peso massimo ante<br>Maximum sash weight |
| 120 mm  | 45 mm o 55 mm   | da 26 mm a 42 mm                  | 400 kg                                   |
| Trasmissione termica<br>Thermal transmittance | Valore Uf 3,3-4,8 W/m² K / Uf value 3,3-4,8 W/m² K<br>(Finestra 3000x2100 mm; vetro Ug 0,9 W/m² K, Psi 0,036 W/m² K)<br>(1 casement window 3000x2100 mm; glass Ug 0,9 W/m² K, Psi 0,036 W/m² K) |                                   |  |

NC-S 175 STH HES LUX



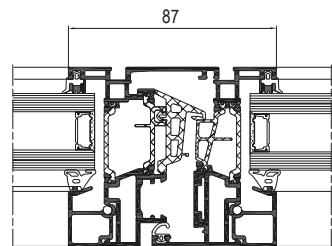
|   |   |                                   |  |
|---|---|-----------------------------------|--|
| Telaio fisso<br>Frame                         | Telaio mobile<br>Sash   | Spessore vetri<br>Glass thickness | Peso massimo ante<br>Maximum sash weight |
| 120 mm  | 45 mm o 55 mm   | da 26 mm a 42 mm                  | 400 kg                                   |
| Trasmissione termica<br>Thermal transmittance | Valore Uf 2,45-3,25 W/m² K / Uf value 2,45-3,25 W/m² K<br>(Finestra 3000x2100 mm; vetro Ug 0,9 W/m² K, Psi 0,036 W/m² K)<br>(1 casement window 3000x2100 mm; glass Ug 0,9 W/m² K, Psi 0,036 W/m² K) |                                   |  |

Bright light and transparency:

The modern design guidelines take on characteristics that are increasingly oriented towards making things fluid, with environmental divisions between inside and outside.  
The integrated systems of the Minimal Line guarantee maximum brightness with excellent thermal and acoustic insulation performance.

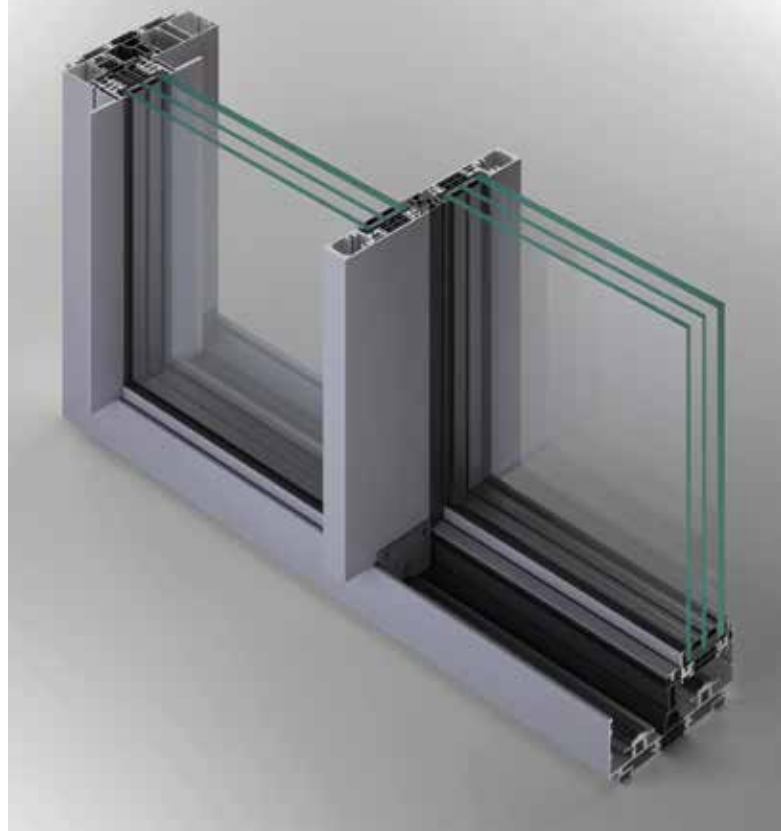


MINIMAL CENTRAL HINGED NODE

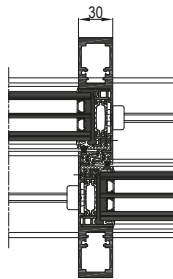


Bright light and transparency:

The modern design guidelines take on characteristics that are increasingly oriented towards making things fluid, with environmental divisions between inside and outside.  
The integrated systems of the Minimal Line guarantee maximum brightness with excellent thermal and acoustic insulation performance even greater yields in HES - High Energy Saving products.  
The side profiles come entirely hidden, installed with only 3 cm towards the central knot.



MINIMAL CENTRAL SLIDING NODE



Montante centrale da 30 mm  
30 mm interlock section