

WALL PANELS ألواح الجدران

NEW
جديد


al-aser
UNITED PROJECTS
W.L.L

       ALASERUNITED



PVC PANELS

Polymerization
of Vinyl Chloride



Sizes: 2900x1220x3mm



PVC Decorative Interior Wall Panels

PVC (Polyvinyl Chloride) decorative interior wall panels are versatile, lightweight, and durable cladding materials used to enhance the aesthetic appeal of interior walls. They come in a variety of designs, textures, and colors, mimicking natural materials like wood, stone, and marble, or offering contemporary patterns. These panels are typically available in different sizes and can be easily cut and installed to fit specific wall dimensions.

1. **Material:** Made from PVC, a type of plastic known for its strength and water resistance.
2. **Design Variety:** Available in numerous designs, colors, and textures to match different interior styles.
3. **Durability:** Resistant to moisture, mold, and mildew, making them suitable for humid areas like bathrooms and kitchens.
4. **Ease of Installation:** Lightweight and easy to handle, these panels often come with interlocking edges or adhesive backs for simple installation.
5. **Low Maintenance:** Easy to clean with just soap and water, and they don't require painting or sealing.
6. **Cost Effective:** More affordable than natural materials like wood or stone while providing a similar aesthetic.



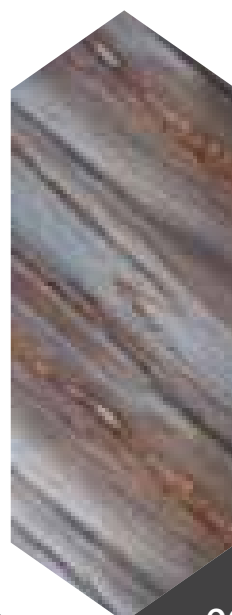
GOLD MARBLE

002



EMPERADOR MARBLE

6005



BLUE MARBLE

009



WHITE MARBLE

007

SIZE:290*122CM



INTERNAL
ONLY

BRONZE
M963-113

SILVER
M911-212

GOLD
M912-212

ROSE GOLD
M913-212

SILVER
M961-113

SIZE:290*122CM



SPECIAL
ITEMS



016



011



008



001

SIZE:290*122CM



SPECIAL
ITEMS

SIZE:290*122CM



داخلي
فقط



GOLD ANTIQUE

005



BRONZE ANTIQUE

006



WHITE LEATHER

TA6801-46



GOLD LEATHER

TA6802-46

SIZE:290*122CM



BAMBOO WALL PANELS

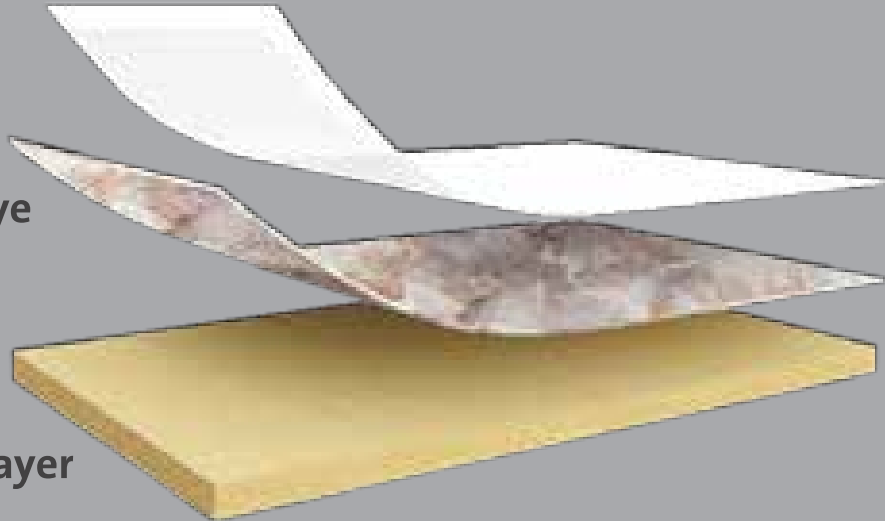


Sizes: 2900x1220x3mm

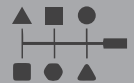
1- PET Layer

2- 3D Inject Laye

3- Nanofiber Layer



FLAME RETARDANT
MATERIAL



VARIETY OF
DESIGNS



THOUGHNESS



MOISTURE PROOF



SOUND INSULAION



FORMALDEHYDE
FREE



Thickness:5 & 8mm



Bending & Shaping



Water & Moisture Proofs



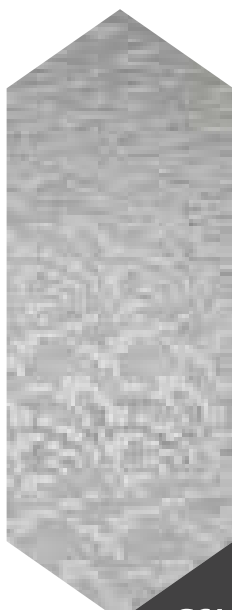
BAMBOO

INTERNAL
ONLY

Bamboo wall decorative panels are an eco-friendly and stylish option for enhancing interior and exterior spaces. These panels can add a natural and textured look to various environments, including homes, offices, and commercial spaces. Here are some key points about bamboo wall decorative panels:

Benefits

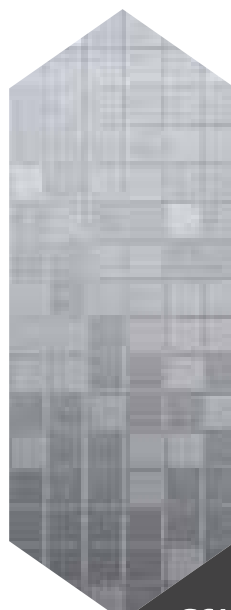
1. **Eco-Friendly:** Bamboo is a sustainable material as it grows quickly and does not require replanting after harvesting.
2. **Aesthetic Appeal:** Bamboo panels add a warm, natural, and exotic look to spaces.
3. **Durability:** Bamboo is strong and can withstand wear and tear, making it suitable for high-traffic areas.
4. **Versatility:** These panels can be used in various settings, including living rooms, bedrooms, offices, and outdoor areas.
5. **Insulation:** Bamboo provides good insulation properties, helping to keep spaces cool in summer and warm in winter.



GSM247



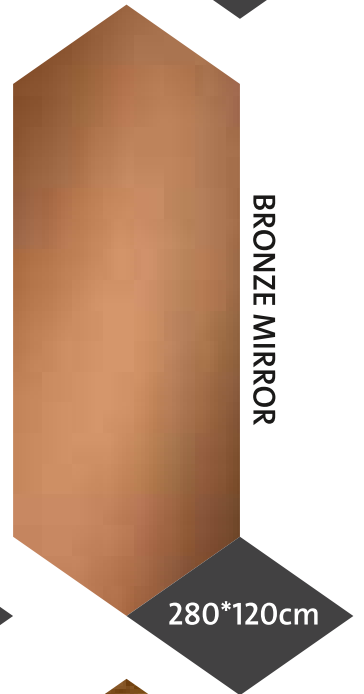
GSM632



GSM473



GSM485





داخلي
فقط



PET-M2



PET-M1



P-09



GLOSSY
WHITE



P-39



P-37



NO-13



P-15



NO-62



P-44



P-45



NO-35



INTERNAL
ONLY



ATW133



GSM406



GSM361



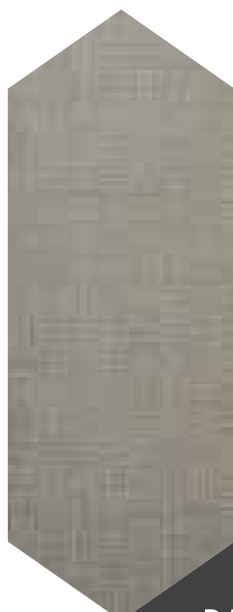
GSM439



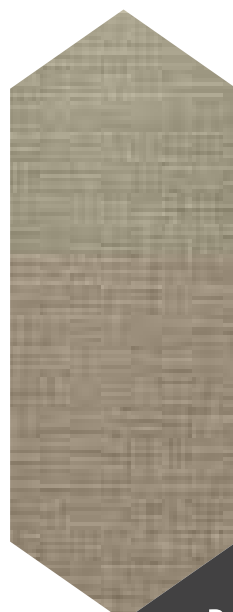
داخلي
فقط



P-69



P-70



P-57



PHOMI

مادة فومي الطينية الاقتصادية

Authorized
Distributor

intertek

Total Quality. Assured.



ALASERUNITED

PHOMI ECONIC CLAY MATERIAL

The raw materials we use in our econic clay coverings are common red, yellow, and white mud, crushed stone, sand, fly ash, cement waste, slag, and other inorganic substances. After collecting, separating color, and crushing into microscopic magnitude powder, the particles are modified with a surfactant. Each particle is coating with an active substance in a mesh-like multi-fold structure and granulated into the final covering material at a low temperature.

This mixture and reaction of our clay materials with different types of polymers is called a "hybrid of organic and inorganic eco-environmental materials." Known plastics and resins are susceptible to aging and fading under UV exposure. However, the hybrid material we produce has a long term structural stability and life span. Derivatives of econic clay also retain all the superior traits of earth and mineral: breathable, moisture resistant, fire resistant, and sustainable.



Impact Resistance



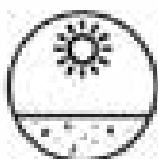
Acid and Alkali Resistance



Water Resistance



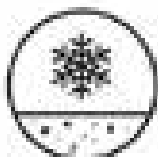
Fireproof



Durable and
Weather Resistant



Salt Spray Resistance



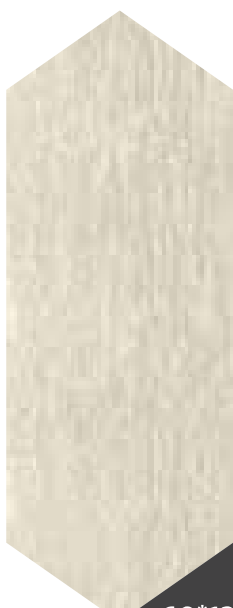
Freeze-thaw Resistance





Travertine Cloud Grey Pro

60*120cm



Travertine Cloud Yellow Pro

60*120cm



Rough Gradient Yellow

60*120cm



White Golden

60*120cm



خارجي
داخلي



Travertine Red Sea Yellow Pro

60*120cm



Travertine Red Sea White Pro

60*120cm



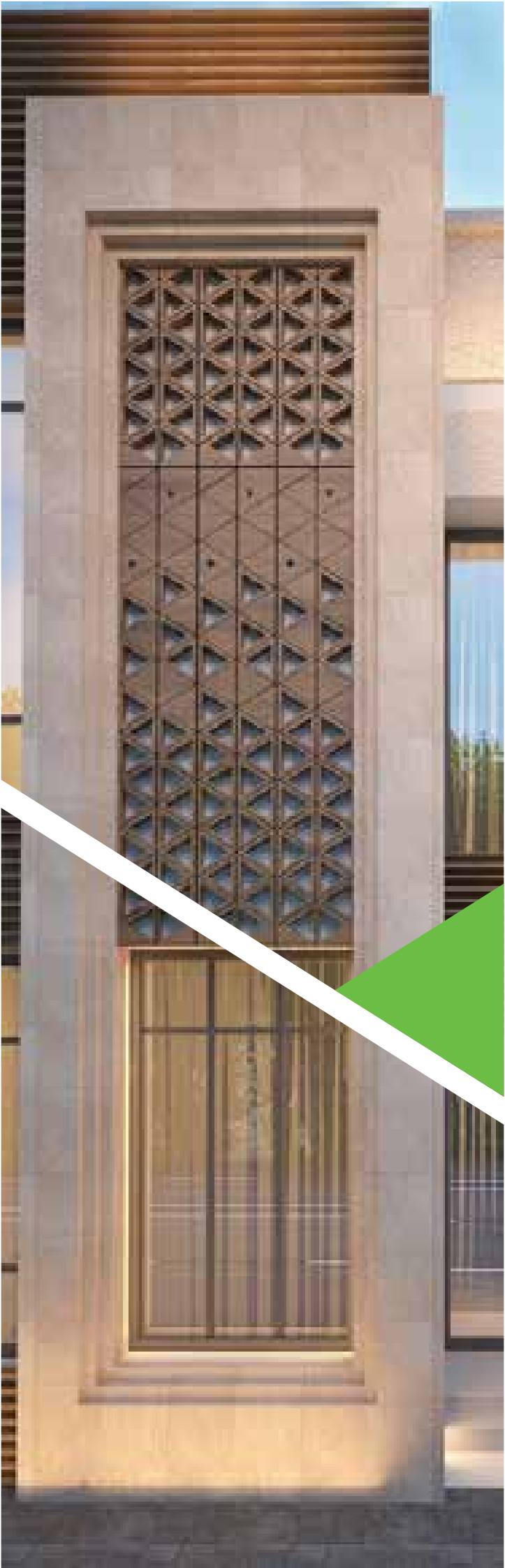
Travertine Loki Red Pro

60*120cm



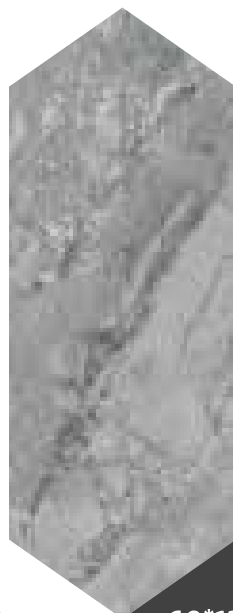
Travertine Loki White Pro

60*120cm



Polished Stone Castol White

60*120cm



Polished Stone Castol Grey

60*120cm



Mount Celestial Classic White

60*120cm



Mount Celestial Glacial Grey

60*120cm



Mount Celestial Castol Blue

60*120cm



Mount Celestial Precious Blue

60*120cm



EXTERNAL
INTERNAL



Marble Andes Gold

60*120cm



Marble Andes Grey

60*120cm



Marble Andes White

60*120cm



Marble Patchy Grey Pro

60*120cm



داخلي
خارجي



Rough Surface Castol Grey

60*120cm

Rough Surface HY001

60*120cm

Rough Surface Andes Gold

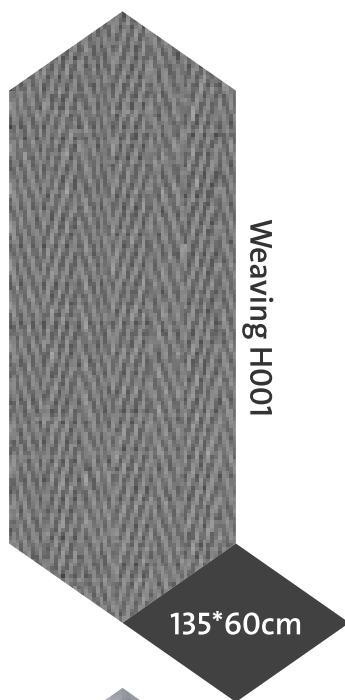
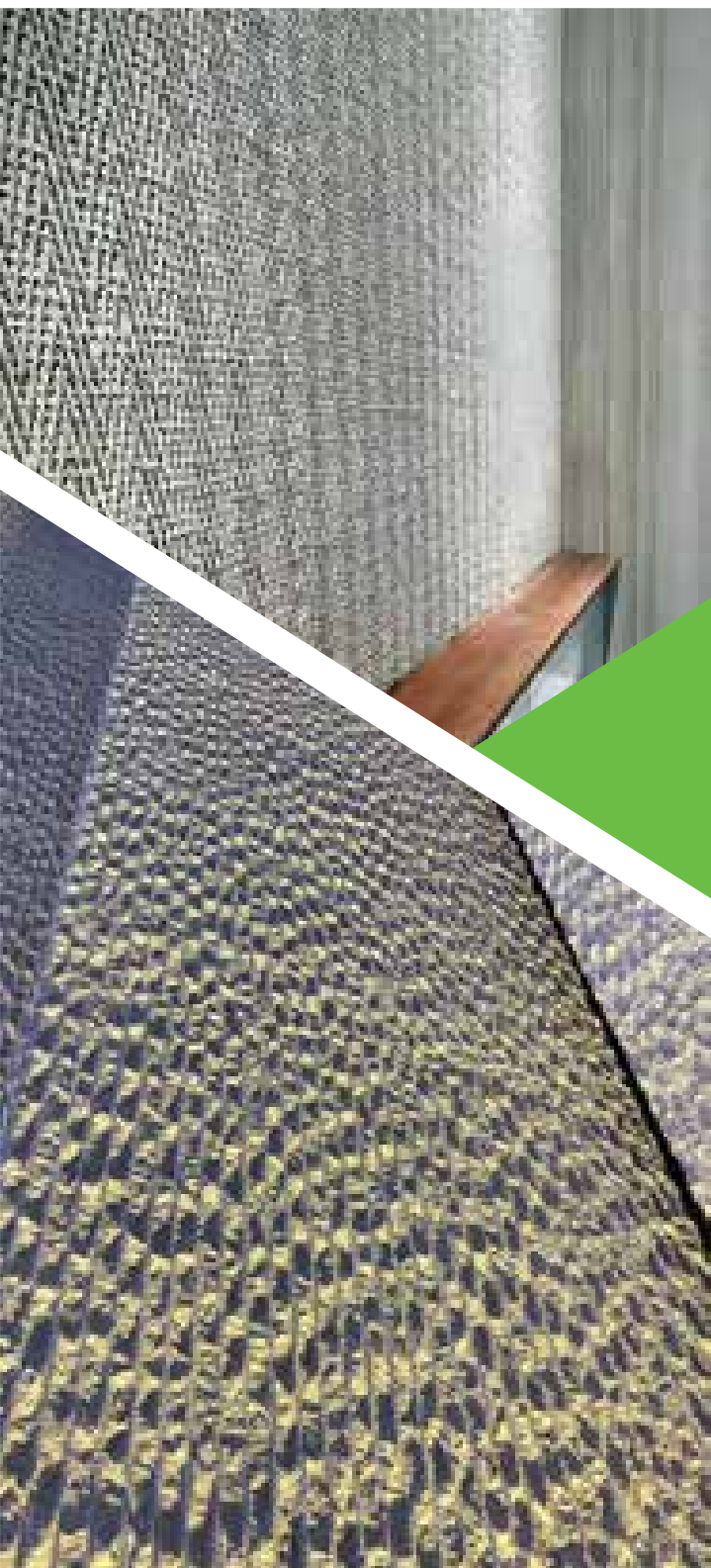
60*120cm

Rough Surface Nile Dark Grey

60*120cm

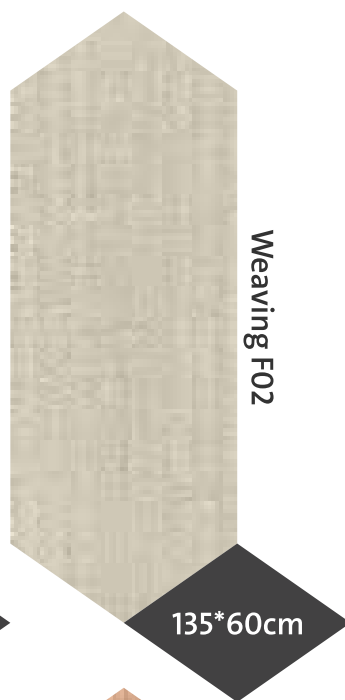
Rough Surface Terrazo

60*120cm



Weaving H001

135*60cm



Weaving F02

135*60cm



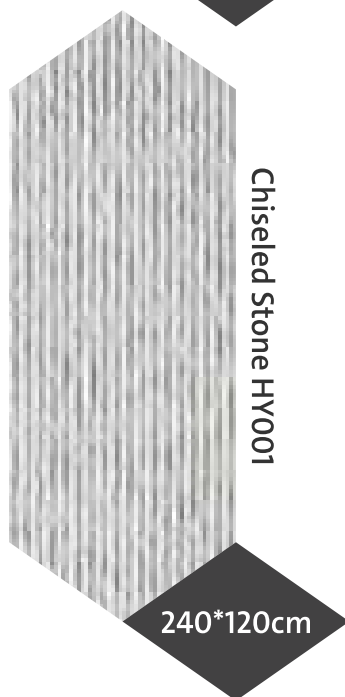
Polish Concrete Medium Grey

60*120cm



Poly Wood Peach

30*135 CM



Chiseled Stone HY001

240*120cm



Chiseled Stone HG03

240*60cm

خارجي
داخلي

GREEN WALLS

الحوائط الخضراء

Sizes: 100x100 cm
Thickness: 4/6 cm



SOON
قريباً

HOLLOW GRID PLATE



Waterproof



Insect prevention



Environmental protection



Flame-retardant

العصر المتحدة للمشاريع
AL ASER UNITED PROJECTS

THANK YOU ...

P.O.Box: 96365-Qatar
M : +974 7008 3004
T: +974 4142 1744
E: info@alaserunited.com
www.alaserunited.com

FOLLOW US ON SOCIAL MEDIA

       ALASERUNITED